

# Winter Mulch Planting

it just makes sense!



Winter Mulch Planting is a no-till (without disturbing the soil) farming method that provides feed with improved pastures for livestock during winter. It is an ideal low cost farming method for small to large acreages that delivers endless benefits.

Not only does it maximise the carrying capacity of your land, in turn it assists in eliminating problem weeds. The picture to the left shows the difference between a paddock that has been mulch planted with this method, versus the one in the foreground that hasn't.

The top picture is the result of this method. The difference in the paddocks, with improved feed in both quality and quantity due to this method will deliver contented livestock with added weight gain.

- ✓ **Weed Control**
- ✓ **Cost Effective**
- ✓ **More feed when native grasses are dormant**



we make it **grow**

[www.tff.com.au](http://www.tff.com.au)

# Mulch Planting Guide

it just makes sense!

This easy method can be adapted to various size acreages. The results of this farming method are seen in all of these photos. Divide your property into paddocks, for this example we have used four. Note, rotational farming or cell grazing is a great farming practice to maximise land use and livestock capacity IF your paddocks are already clean from weeds. IF NOT there is the chance the livestock, by grazing more heavily on the edible grasses, leaves greater opportunity for the weeds to increase. Mulch Planting will address and improve this issue.

## 1. FEED OFF

Feed off the first paddock with your livestock and let them graze for a longer than usual period. We want to really 'graze down' this paddock, this will also rest our other 3 paddocks. It will also highlight the problem weeds or not so palatable grasses. It is at this point we must treat these problem areas by removing thistle, rats tail or other noxious weeds.

## 2. PLANT THE SEED

Use your tow behind fertiliser spreader to apply the Rye Grass seed and Feed Oats in 2 passes, due to the different seed size. These two are a perfect mix as the Oats will germinate first and with its broad leaf will provide shelter for the Rye Grass whilst it gets established. Rye Grass seed - 25kg per acre. Feed Oats - 50kg per acre. Now is also a good time to plant Clover for legumes - 1 kg per acre. Paspalum, Green Panic & Rhodes grass can be planted up until April as there is still enough warmth in the soil to germinate the seed.

## 3. FERTILISE

Fertilise with Terra Firma products such as Grassmaster® at 75kg per acre and Lime Impact at 75kg per acre. (This will assist the pH, add available calcium and aerate the soil). Growers wanting a 100% organic method would use Terra Firma Poultry Manure Pellets at 150kg per acre.

## 4. MESH RUN PASS

Wire mesh, a mesh gate or even concrete mesh are all items that can be used for this. Attach behind your ride on, or small tractor mower and drive around this paddock to break up manures.

## 5. MOW

This will apply mulch and cover to your seed.

## 6. WATER

Whether it be by rain or irrigation. If irrigating, to save time and water, make the soil moist for the first 3 days, keeping damp but with 'no run off'. Oats typically germinate in 5-6 days, with the Rye Grass on days 9-10.

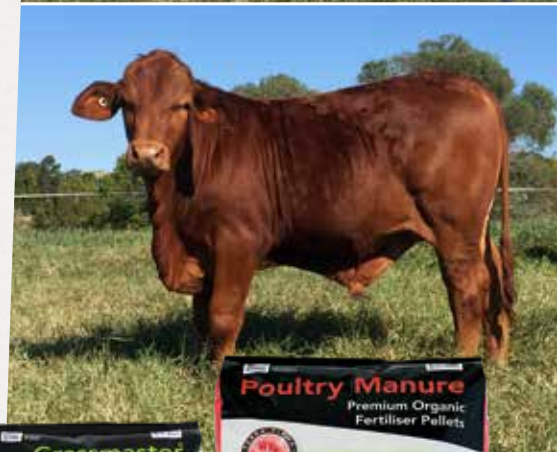
For further information on these products visit [www.tff.com.au](http://www.tff.com.au) or call us on 07 5541 2322 email [info@tff.com.au](mailto:info@tff.com.au)



PADDOCK AFTER MOW (step 5)



3 WEEKS AFTER MOW (step 5)



we make it **grow**

[www.tff.com.au](http://www.tff.com.au)